

Open projects group

June - July 2017 Edition

Equipment
Stainless Steel
Joinery
Fit out
Design

Your Complete Hospitality Solution

INTERIOR DESIGN PACKAGE INCLUDED WITH NEW FIT OUTS *



See us at Fine Foods Sydney
11th - 14th September 2017
Stand D46

WE WILL BEAT ANY WRITTEN QUOTE on Hobart Ecomax 402, 502, 602 *



Glass Washer
Ecomax402
435 W x 530 D x 830 H
Sgl Phase - 15amp
\$2,100.00*
RRP\$4,200.00



Dishwasher
Ecomax502
550 W x 600 D x 830 H
Sgl Phase - 15amp
\$3,100.00*
RRP\$6,200.00



Hood Dishwasher
Ecomax602
713 W x 821 D x 1480 H
Sgl Phase - 15amp
\$3,990.00*
RRP\$7,980.00

Dream Big

RAPID PRE-APPROVED FINANCE UP TO \$70K*



In This Edition

Feature Projects - Blue Room Cinebar & Rivea Italian Dining



STH QLD - 1800 461 421
NTH QLD - 0404 461 979

sales@openprojects.com.au
www.openprojects.com.au

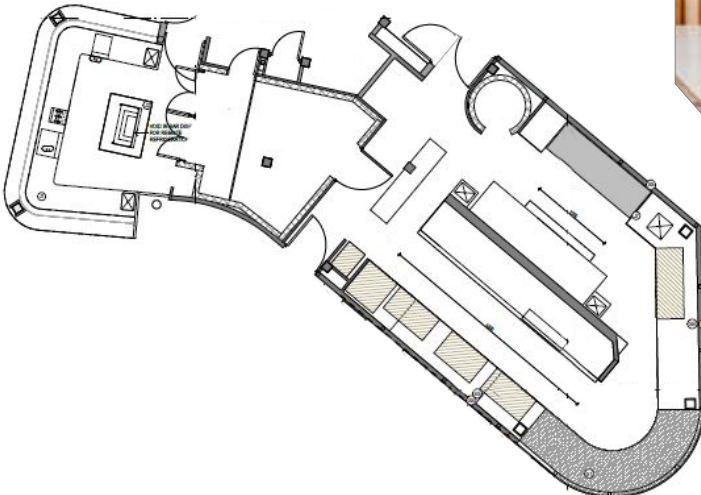
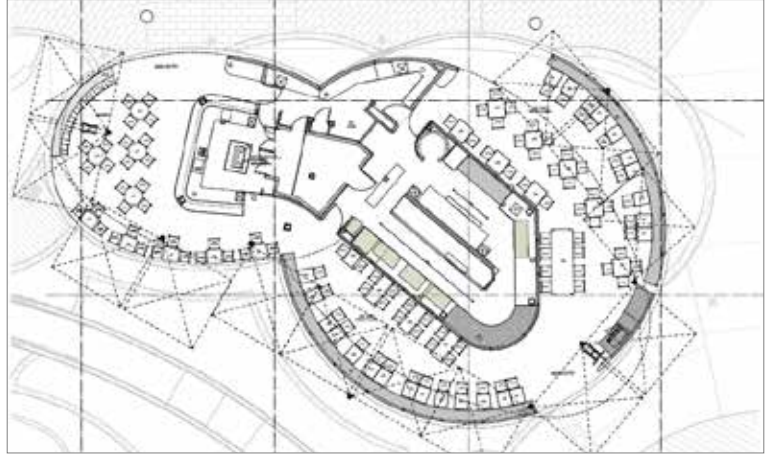
Rivea Italian Dining, Pacific Fair

Rivea Italian Dining, located in the heart of the new fashion precinct, at one of the Gold Coasts premier retail locations, Pacific Fair, is one of the latest fit out projects completed by Open Projects Group.

Presenting unique challenges, the project was designed and constructed around an existing open air roofed area. To complete this project Open Projects Group installed all structural supports for the external building façade, all walls, external glazing, the internal glass exhaust canopy, manufactured and installed all joinery works, custom made furniture and bench seating, commercial kitchen equipment, stainless benching, cold rooms, refrigeration as well as all fit out components.

The expansive open kitchen was equipped with a range of equipment specifically selected for ease of use, reliability and performance. Brands included Skope, Ironox, Electrolux, Hobart, Hoshizaki, Coldline, Vesuvio, Metro, Lancer, Morreti Forni & WOW.

Using a mix of classic stone, laminates, authentic brass, solid timbers, imported tiles and clean crisp finishes, Rivea Italian Dining is Mediterranean at its finest.



Cookline Packages



COMPLETE COOKLINE PACKAGE - \$9,999.00*

RRP \$13,805.00

Individual buy

A)	Salamander S86	\$1,752.00	RRP\$2,235.00
B)	Salamander Bench S21004	\$990.00	RRP\$1,263.00
C)	2 Burner W/ Griddle & Oven R90-2-60GR	\$4,042.00	RRP\$5,155.00
D)	600m Char Grill B60	\$1,756.00	RRP\$2,240.00
E)	Wide Fryer CSR42G	\$2,283.00	RRP\$2,912.00

TRUEHEAT'S all-purpose gas cooking equipment features quality stainless steel construction and a modular design to offer total flexibility.



COMPLETE COOKLINE PACKAGE - \$13,789.00*

RRP \$20,300.00

Individual buy

A)	Salamander on Stand SM60 & 807422	\$2,621.00	RRP\$3,600.00
B)	6 Burner W/ Oven CRO-6B	\$4,295.00	RRP\$5,900.00
C)	Char Grill BCH6C	\$2,439.00	RRP\$3,350.00
D)	Flat Grill BCH6P	\$2,439.00	RRP\$3,350.00
E)	Deep Fryer FV45	\$2,985.00	RRP\$4,100.00

LUUS is all about the people, sustainability and the environment. From product design to the production line, LUUS combine smart style with high performance.



COMPLETE COOKLINE PACKAGE - \$35,138.00*

RRP \$56,537.00

Individual buy

A)	Salamander SEA45	\$2,083.00	RRP\$3,100.00
B)	Air-o-Steam Oven W/ Stand SPEL.AOS101EKR1	\$14,050.00	RRP\$20,907.00
C)	Deep Fryer E7FRGD1GF0	\$3,817.00	RRP\$5,680.00
D)	Pasta Cooker inc. 2 x Baskets E9PCGD1MF0 / BSK4PC700	\$4,664.00	RRP\$6,940.00
E)	4 Burner W/ Oven E9GCGH4CVM	\$7,694.00	RRP\$11,450.00
F)	Sloped 800m Flat Plate E9FTEHCS00	\$4,838.00	RRP\$7,200.00
G)	Open Base Cupboard E9BANH0000	\$847.00	RRP\$1,260.00

ELECTROLUX provides restaurants and industrial kitchens with complete cooking equipment solutions.

* Terms and Conditions
Special offer ends 30th July 2017 Only while stocks last. Images for display purposes only, models may vary. No returns on custom goods. All Prices shown are for supply only and carry the following exceptions, GST, delivery (Both from supplier and to site), installation and assembly costs. Some items may become unavailable due to unforeseen supply problems. *Written quotations to be in accordance with manufacturers wholesale price. *Design Package excludes architectural drawings, hydraulics & approvals. Package is up to the value of \$3500.00. Open Projects group reserves the right to change product specifications without notice, and cannot be held responsible for any errors and/or omissions.*Approval is conditional upon satisfactory ID, credit check and confirmation of Australian/New Zealand Citizenship/permanent residency.

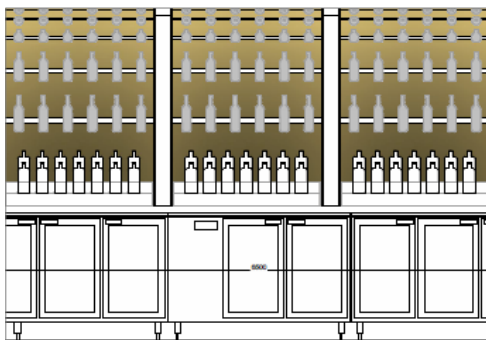
Blue Room Cinebar, Paddington



Reminiscent of an old subway station and designed, manufactured and installed by Open Projects Group, Blue Room Cinebar features an eclectic mix of finishes including raw steel, cut bricks, copper & solid timber, with accents of wrought iron and decorative LED features.

The back bar incorporates a rolled steel channel with an LED lit glass bottle display and Williams Refrigeration, whilst the main bar is an eye catching design of solid timber tops, random cut bricks and brass mesh panelling. Recycled wrought iron panels and railway sleepers have been constructed to form a decorative divide between the bar lounge area and the bar itself.

All equipment for this project was specified and installed by Open Projects Group with Williams Refrigeration manufacturing a custom Cameo freezer to fit with the back bar fridges, featuring sweat resistant heated glass fronts and energy efficient lighting, whilst looking sleek and stylish.





Hood Dishwasher
EcomaxPlus 603
711 W x 815 D x 1470 H
3 Phase
\$4,100.00
RRP \$8,200.00



Hood Dishwasher
AM900
711 W x 815 D x 1510 H
3 Phase
\$4,900.00
RRP \$9,800.00



Hood Dishwasher
AMX
711 W x 815 D x 1510 H
3 Phase
\$5,900.00
RRP \$11,800.00



Pot Washer
UX
780 W x 945 D x 1984 H
3 Phase
\$14,805.00
RRP \$29,610.00



Free Standing ROI Unit
ROS
156 W x 565 D x 459 H
Sgl Phase - 15amp
\$2,325.00
RRP \$4,650.00



Glass Washer
Ecomax 403
435 W x 530 D x 700 H
Sgl Phase - 15amp
\$2,900.00
RRP \$5,800.00



U/C Dishwasher
Ecomax 503
575 W x 600 D x 835 H
Sgl Phase - 15amp
\$3,900.00
RRP \$7,800.00



Glass Washer
GC
460 W x 590 D x 700 H
Sgl Phase - 15amp
\$3,600.00
RRP \$7,200.00



U/C Dishwasher
FX
600 W x 600D x 820 H
Sgl Phase - 15amp
\$4,900.00
RRP \$9,800.00



Glass Washer w/ ROI
GCROI-90A
460 W x 660 D x 815 H
Sgl Phase - 15amp
\$5,425.00
RRP \$10,850.00



Bonnet 6 Tray Combi Oven
PRECIJET
848 W x 570 D x 721 H
3 Phase
\$9,250.00
RRP \$12,676.00



Planetary Mixer
A200
381 W x 514 D x 772 H
10amp
\$4,300.00
RRP \$7,830.00



Medium Duty Slicer
EDGE
650 W x 667 D x 647 H
10amp
\$2,195.00
RRP \$3,990.00



Microwave
NE1853
422 W x 508 D x 337 H
Sgl Phase - 15amp
\$1,799.00
RRP \$3,270.00

* Terms and Conditions
Special offer ends 30th July 2017 Only while stocks last. Images for display purposes only, models may vary. No returns on custom goods. All Prices shown are for supply only and carry the following exceptions, GST, delivery (Both from supplier and to site), installation and assembly costs. Some items may become unavailable due to unforeseen supply problems. *Written quotations to be in accordance with manufacturers wholesale price. *Design Package excludes architectural drawings, hydraulics & approvals. Package is up to the value of \$3500.00. Open Projects group reserves the right to change product specifications without notice, and cannot be held responsible for any errors and/or omissions.*Approval is conditional upon satisfactory ID, credit check and confirmation of Australian/New Zealand Citizenship/permanent residency.

Affordable

Benchtop

Solutions



Toaster Grill
W.GTQI.4 - \$559.00
4 Slice - RRP \$805.00
W.GTQI.8 - \$629.00
8 Slice - RRP \$905.00
W.GTQI.15 - \$716.00
15 Slice - RRP \$1,030.00

Benchtop Deep Fryer
W.FRS50 - \$368.00
5L - RRP \$530.00
W.FRS80 - \$403.00
8L - RRP \$580.00

Contact Grill
W.CT6 - \$650.00
4-6 Slice - RRP \$935.00
W.CT.8 - \$737.00
6-8 Slice - RRP \$1060.00

Boiling Plate
W.BPS10 - \$195.00
Single Plate - RRP \$280.00
W.BPD20 - \$271.00
Double Plate - RRP \$390.00

Benchtop Double Fryer
W.FRT50 - \$629.00
2 x 5L - RRP \$905.00
W.FRT80 - \$709.00
2 x 8L - RRP \$1,020.00

Food

Service

Equipment

Solutions



Cold Display
KT.SQRCD.9 - \$4,276.00
900 W - RRP \$5,980.00
KT.SQRCD.12 - \$4,769.00
1200 W - RRP \$6,670.00
KT.SQRCD.15 - \$5,713.00
1500 W - RRP \$7,990.00

Hot Food Display
W.HFSS24 - \$1,563.00
2 Rows, 4 Bays - RRP \$2,250.00
W.HFSS25 - \$1,772.00
2 Rows, 5 Bays - RRP \$2,550.00
W.HFSS26 - \$1,946.00
2 Rows, 6 Bays - RRP \$2,800.00

Pie & Hot Food Display
W.PIA50 - \$452.00
4 Shelf - RRP \$650.00
W.PIA100 - \$549.00
5 Shelf - RRP \$790.00

Square Hot Food Display
W.HFSQ22 - \$1,702.00
2 Rows, 2 Bays - RRP \$2,450.00
W.HFSQ23 - \$1,932.00
2 Rows, 3 Bays - RRP \$2,780.00
W.HFSQ24 - \$2,154.00
2 Rows, 4 Bays - RRP \$3,100.00

Chip Warmer
CH.CD - \$1,756.00
RRP \$2,280.00
CH.CD.B.11 - \$1,509.00
RRP \$1,960.00

Stainless

Steel

Bench

Solutions



Mobile Bench
SS03.1200 - \$674.00
600 D x 1200 W - RRP \$943.00
SS03.1800 - \$894.00
600 D x 1800 W - RRP \$1,250.00
SS03.2400 - \$1,118.00
600 D x 2400 W - RRP \$1,563.00

Infill Bench
SS02.0300 - \$423.00
600 D x 300 W - RRP \$591.00
SS02.0450 - \$462.00
600 D x 450 W - RRP \$646.00
SS02.0600 - \$480.00
600 D x 600 W - RRP \$672.00

Bench W/ Splashback
SS02.1200 - \$528.00
600 D x 1200 W - RRP \$738.00
SS02.1500 - \$597.00
600 D x 1500 W - RRP \$835.00
SS02.2100 - \$877.00
600 D x 2100 W - RRP \$1,227.00

Bench W/ Centre Sink
SS05.1200.C - \$903.00
600 D x 1200 W - RRP \$1,263.00
SS05.1500.C - \$931.00
600 D x 1800 W - RRP \$1,302.00
SS05.2100.C - \$1,295.00
600 D x 2100 W - RRP \$1,811.00

Double Bench Over-shelf
SS13.1200 - \$338.00
300 D x 1200 W - RRP \$473.00
SS13.1500 - \$395.00
300 D x 1500 W - RRP \$552.00
SS13.2100 - \$560.00
300 D x 2100 W - RRP \$783.00



HOSHIZAKI

blendtec



Refrigeration and Freezer Solutions

Hoshizaki are the world leader ice machines and professional food service refrigeration and freezer units.



1 Door Upright

HRE-77MA - \$2,016.00
Refrigerator - RRP \$3,665.22

HFE-77MA - \$2,138.00
Freezer - RRP \$3,887.91

2 Door Upright

HRE-127MA - \$2,699.00
Refrigerator - RRP \$4,906.82

HFE-127MA - \$2,974.00
Freezer - RRP \$5,407.88

3 Door Upright

HRE-187MA - \$3,715.00
Refrigerator - RRP \$6,755.28

HFE-187MA - \$4,014.00
Freezer - RRP \$7,298.11

2 Door U/C

RTC-120MNA - \$ 2,010.00
Refrigerator - RRP \$3,654.11

FTC-120MNA - \$2,031.00
Freezer - RRP \$3,692.52

3 Door U/C

RTC-180MNA - \$2,347.00
Refrigerator - RRP \$4,266.53

FTC-180MNA - \$2,353.00
Freezer - RRP \$4,278.21

Commercial Ice Making Solutions



Crescent Ice Machine

KM-75A - \$2,378.00
40 Kg Ice Bin - RRP \$4,205.65

KM-50A - \$1,769.00
23 Kg Ice Bin - RRP \$3,128.30

KM-30A - \$1,451.00
16 Kg Ice Bin - RRP \$2,565.00

Cube Ice Machine

IM-130NE-28 - \$3,919.00
Produces 100Kg a day - RRP \$6,929.30

IM-240NE-28 - \$5,428.00
Produces 230Kg a day - RRP \$9,597.85

U/C Cube Ice Machine

IM-45CNE-25 - \$2,147.00
Produces 35Kg a day - RRP \$3,797.15

IM-65NE-25 - \$2,611.00
Produces 45Kg a day - RRP \$4,617.00

Flaked & Nugget Ice Machine

FM-150KE - \$4,086.00
Produces 150Kg a day - RRP \$7,225.70

On Counter Blender Solutions



Stealth875

\$1,939.00

Comes W/ 2 Jars, Sound Enclosure & Soft Lid

10amp - RRP \$3,429.00

218 W x 229 D x 439 H

Connoisseur825

\$1,756.00

Comes W/ 2 Jars, Sound Enclosure & Soft Lid

10amp - RRP \$3,105.00

229 W x 229 D x 479 H

Chef775

\$862.00

Comes W/ 1 Jar & Soft Lid

10amp - RRP \$1,525.00

178 W x 233 D x 396 H

Chef600

\$652.00

Comes W/ 1 Jar & 1 Vented Lid

10amp - RRP \$1,153.00

177 W x 203 D x 381 H

EZ600

\$638.00

Comes W/ 1 JarW & Vented Lid

10amp - RRP \$1,128.00

117 W x 203 D x 381 H

* Terms and Conditions
Special offer ends 30th July 2017 Only while stocks last. Images for display purposes only, models may vary. No returns on custom goods. All Prices shown are for supply only and carry the following exceptions, GST, delivery (Both from supplier and to site), installation and assembly costs. Some items may become unavailable due to unforeseen supply problems. *Written quotations to be in accordance with manufacturers wholesale price. *Design Package excludes architectural drawings, hydraulics & approvals. Package is up to the value of \$3500.00. Open Projects group reserves the right to change product specifications without notice, and cannot be held responsible for any errors and/or omissions.*Approval is conditional upon satisfactory ID, credit check and confirmation of Australian/New Zealand Citizenship/permanent residency.

www.openprojects.com.au



Your Complete Hospitality Solution

Head Office & Showroom - 2 Commercial Drive, Ashmore, QLD 4214

Open Projects Group takes pride in providing a professional, personalised and co-ordinated service to our clients, in every aspect of the hospitality industry.

About Us

A complete hospitality provider, Open Projects understands the importance of appeal, functionality and practicality. We don't just work for our clients, we work with them in every aspect, from selecting the smallest equipment purchase to a large design and fit out project. Our team are committed to making the difficult seem easy.

Equipment

With access to all major brands and more, we will always be able to find you the right equipment for your needs. With years of combined industry experience, our team are on hand to work with you from one off pieces of equipment to complete kitchen packages, offering energy efficient equipment alternatives to lower running costs and maximise serviceability and functionality.

Design

Open Projects design team has combined experience in interior and commercial kitchen design and technical drafting. We make the functional and the artistic come to life. Whether a refurbishment of an existing space or a new venue we work with our clients to formulate spaces built around appearance, functionality and flow.

Stainless Steel

Our expertise in fabrication allow us to custom design and build a variety of stainless steel and metal work solutions to meet specific requirements within the hospitality industry. Set up to work in conjunction with our joinery and equipment divisions it allows for seamless installation of items on site, through co-ordinated manufacturing and quality control.

Joinery

As each project has its own unique requirements, quality and craftsmanship throughout the manufacturing process is paramount. Working with a vast selection of materials such as recycled and solid timbers, laminates, acrylics, steel and copper, we strive to maintain the integrity of the design of the project, and ensure all joinery installed in our fit outs is of the highest standard and built to last.

Fit-outs

You are assured of a project management team that is managing your project and keeping you informed. We offer a single point of contact from start to finish with a project manager, from the smallest to the largest request, on time, on budget and with a superior end result.



Equipment - Stainless Steel - Joinery - Fit out - Design